

Pearl Pigment Diamond Series

Pearl Pigment Diamond Series is an inorganic pigment with a borosilicate (Ca/Na) base material that is coated with a metal oxide to reflect light and produce a variety of colored glitter.

Physical properties

Chinese INCI Name : 硼硅酸钠钙 · 二氧化钛 · 氧化锡
CAS No. : 65997-17-3 · 13463-67-7 · 18282-10-5
EINECS No. : 266-046-0 · 236-675-5 · 242-159-0

Application

- Eyeshadow
- Lip Gloss
- Eyeliner
- Powder Foundation

Composition

The color changes depending on the thickness of the coating (titanium oxide).

	Calcium Sodium Borosilicate	Titanium Dioxide	Tin Oxide
White G140S	89-92%	8-10%	0-1%
Gold G240S	86-89%	11-13%	0-1%
Red G340S	83-86%	14-16%	0-1%
Purple G440S	80-84%	16-19%	0-1%
Blue G540S	78-81%	19-21%	0-1%
Green G640S	75-78%	22-24%	0-1%

Features

- Due to its high luminosity, it can give a unique coloration, especially to make-up cosmetics.
- It has a relatively smooth feel when applied, making it suitable for a variety of formulations.

White G140S



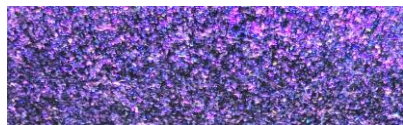
Gold G240S



Red G340S



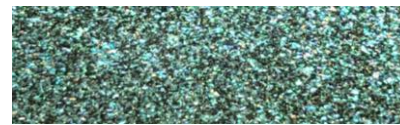
Purple G440S



Blue G540S



Green G640S



※The appearance of this product is different from the appearance when applied to the skin, so please try it out.

Material information

Product name	INCI Name	Particle size range	Packing
Pearl Pigment Diamond Series	Calcium Sodium Borosilicate	30-150 μ m	1kg 5kg 25kg
	Titanium Dioxide		
	Tin Oxide		



Supplier OHCHEM COMMERCE CO., LTD.
3-21-29, KANDA-SAKUMACHO CHIYODA-KU, TOKYO 101-0025
TEL : 03-3864-1271 FAX : 03-3864-1272 MAIL : info@ohchem.net
WEB : http://www.ohchem.net